

### ISTRUZIONI PER L'APPLICAZIONE DEL PRODOTTO

#### 1 PREPARAZIONE DEI SUPPORTI

Nel caso di muri perfettamente lisci: per un risultato durevole, pulire la superficie da rivestire, eliminando ogni traccia delle pitture precedenti, soprattutto se non completamente aderenti al muro.

Poi, eventualmente, applicare uno strato di fissativo Fondo 2000. Essiccazione 12/24 ore.

Nel caso di muri scabri o con evidenti irregolarità: prima di compiere le precedenti operazioni, è consigliabile rasare la superficie da trattare.

#### 2 APPLICAZIONE DI ART DECOR FONDO

Applicare uno strato di Art Decor Fondo, usando un rullo a pelo corto.

Resa di Art Decor Fondo: 10 m<sup>2</sup>/lt

Sovrapplicazione: 4-6 ore a seconda della temperatura ambientale.

#### 3 APPLICAZIONE DI ISEO

Applicare Iseo con il pennello spalter con pennellate incrociate su una superficie di 1-2 m<sup>2</sup> e ripassando poi con l'attrezzo scarico per ottenere un effetto gofrato, a rilievo.

Se invece si preferisce un effetto liscio, dopo 15-30 minuti (a seconda del grado di assorbimento della parete) ripassare Iseo con la spatola di plastica.

### USAGE INSTRUCTIONS

#### 1 SURFACE PREPARATION

For perfectly smooth walls: in order to get a durable result, clean the surface, removing any previous paints, especially where not completely adherent.

Then, apply just one coat of Fondo 2000. Drying 12/24 hrs.

For irregular walls: before the above mentioned operations, smooth, sand and fill carefully the surface to be treated.

#### 2 APPLICATION OF ART DECOR FONDO

Apply a coat of Art Decor Fondo using a short hair roller.

Coverage of Art Decor Fondo: 10 m<sup>2</sup>/lt

Recoatings: 4-6 hours according to the ambient temperature.

#### 3 APPLICATION OF ISEO

Apply Iseo with a spalter brush, giving crossed and irregular strokes on a 1-2 m<sup>2</sup> surface and tracing over again with the not soaked spalter, in order to get an embossing, "in relief" effect.

When a perfectly smoothed effect is desired, after 15-30 minutes (due to wall absorption) apply again Iseo with a plastic trowel.

### CONSEIL DE MISE EN ŒUVRE DU PRODUIT

#### 1 PRÉPARATION DES SUPPORTS

Dans le cas des murs parfaitement lisses: pour un résultat durable, les supports doivent être propres, nettoyer la surface à revêtir, en supprimant toutes les traces d'anciennes peintures surtout si elles ne sont pas adhérentes.

Ensuite, si nécessaire, appliquer une couche d'impression Fondo 2000. Séchage 12/24 heures.

Dans le cas de parois rugueuses ou avec des irrégularités évidentes: avant d'effectuer les opérations précédentes, il est conseillé de lisser la zone à traiter.

#### 2 APPLICATION DE ART DECOR FONDO

Appliquer une couche de Art Decor Fondo, en utilisant un rouleau à poil court.

Rendement Art Decor Fondo: 10 m<sup>2</sup>/lt

Recouvrable après: 4-6 heures selon la température ambiante.

#### 3 APPLICATION DE ISEO

Appliquer Iseo avec un spalter en le croisant durant l'application sur une surface de 1-2 m<sup>2</sup> et puis repasser la surface avec l'outil déchargé de produit pour obtenir un effet gaufré en relief si vous préférez un effet lisse, après 15-30 minutes (en fonction du degré d'absorption de la paroi), appliquer de nouveau Iseo avec une spatule en plastique.

### INFORMAZIONI TECNICHE

RESA: circa 8-10 m<sup>2</sup>/lt

PULIZIA ATTREZZI: acqua e sapone

TEMPERATURA DI STOCCAGGIO: +5°C/+35°C

PRONTO ALL'USO

### TECHNICAL INFORMATION

COVERAGE: about 8-10 m<sup>2</sup>/lt

TOOLS CLEANING: water and soap

STORAGE TEMPERATURE: +5°C/+35°C

READY TO USE

### INFORMATION TECHNIQUE

RENDEMENT: environ 8-10 m<sup>2</sup>/lt

NETTOYAGE DES OUTILS: eau et savon

LA TEMPÉRATURE DE STOCKAGE: +5°C/+35°C

PRÊT À L'EMPLOI



Boero Bartolomeo S.p.A

I - 16121 Genova - Via Macaggi, 19 - Tel. +39 010.5500.1 - Fax +39 010.5500.305  
www.boero.it - email: sales.boero@boero.it

MADE IN ITALY



P09994850001000



# ARTDECOR



## ISEO

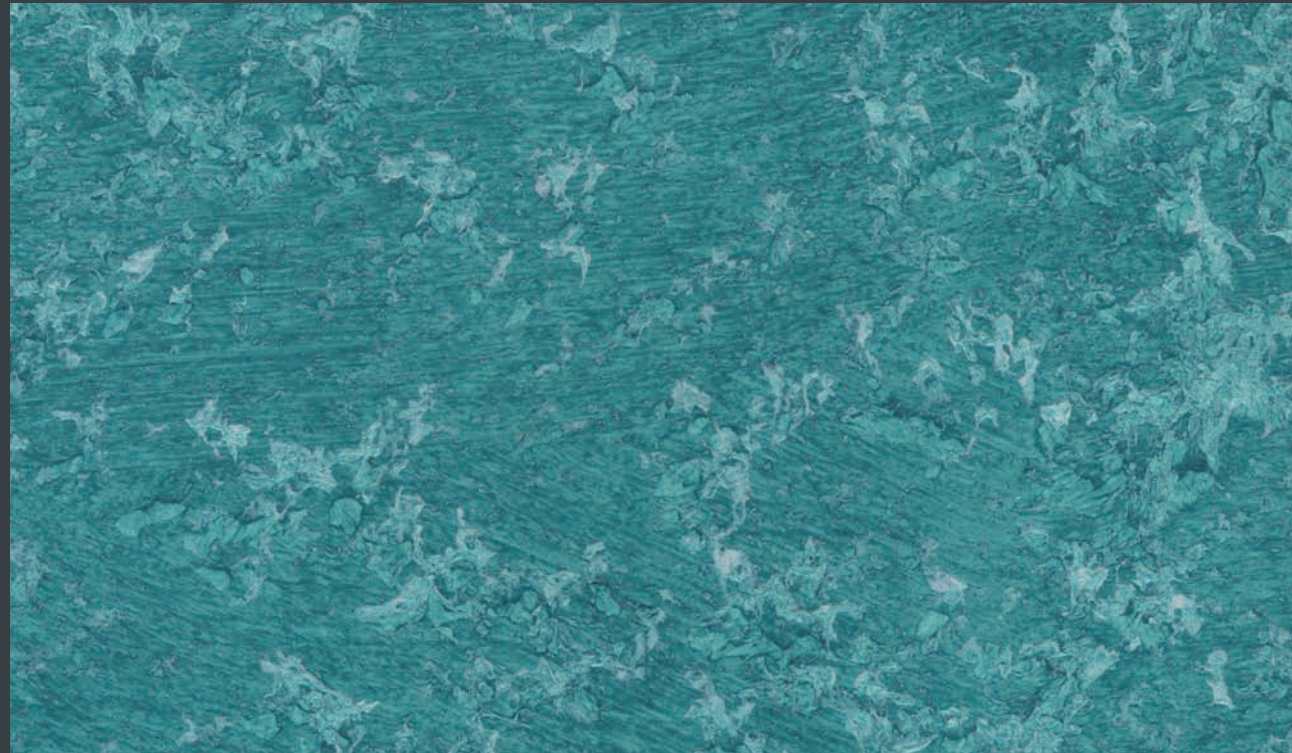
EFFETTO MULTICROMATICO | POLYCHROMATIC EFFECT | EFFET POLYCHROMATIQUE



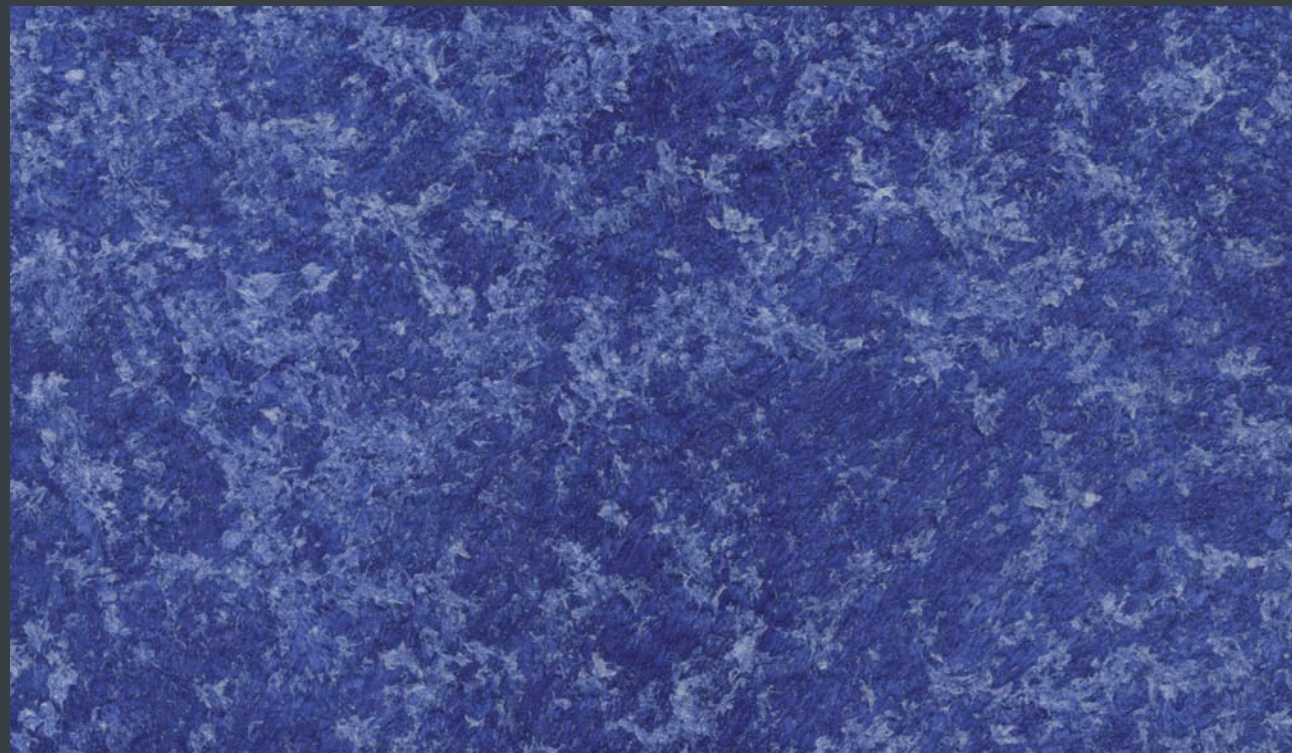


**ARTDECOR**  
ISEO

EFFETTO MULTICROMATICO  
POLYCHROMATIC EFFECT  
EFFET POLYCHROMATIQUE



ISEO 51



ISEO 55

Tutte le tinte riportate sulla presente cartella sono da considerarsi puramente indicative  
All colors shown on this colour card are merely indicative  
Toutes les couleurs présentées sur ce tableau sont à titre indicatif



ISEO 15



ISEO 48



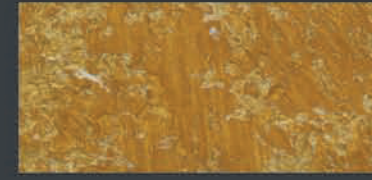
ISEO 67



ISEO 57



ISEO 14



ISEO 108



ISEO 64



ISEO 46



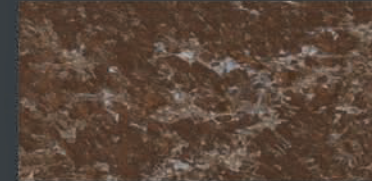
ISEO 39



ISEO 36



ISEO 38



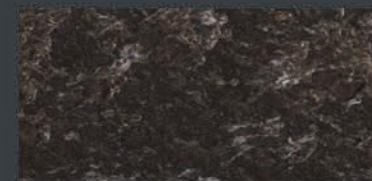
ISEO 92



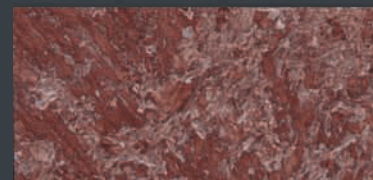
ISEO 99



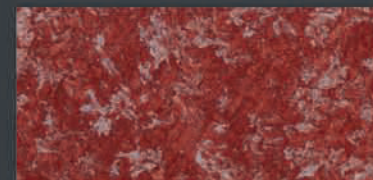
ISEO 97



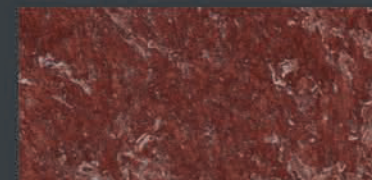
ISEO 95



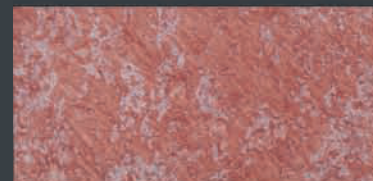
ISEO 30



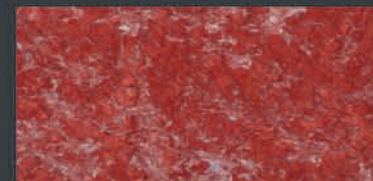
ISEO 05



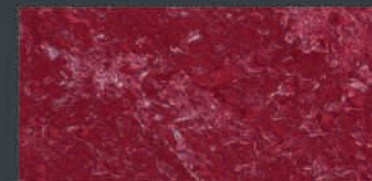
ISEO 54



ISEO 16



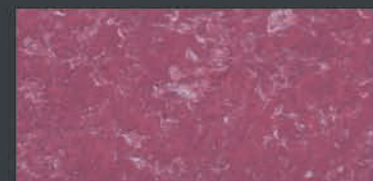
ISEO 109



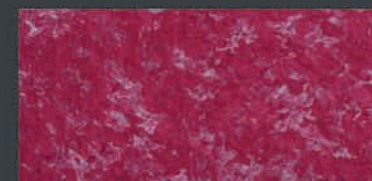
ISEO 106



ISEO 58



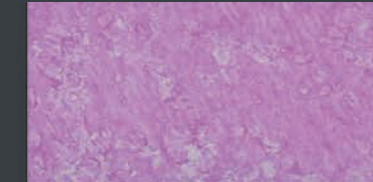
ISEO 80



ISEO 105



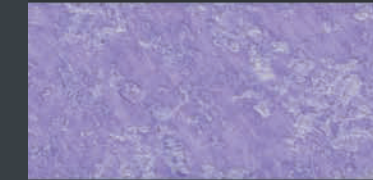
ISEO 63



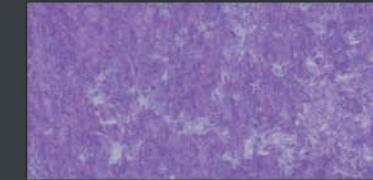
ISEO 21



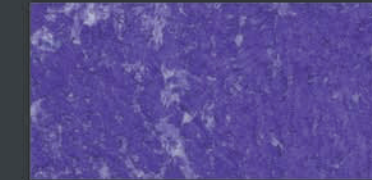
ISEO 10



ISEO 22



ISEO 25



ISEO 11



ISEO 61



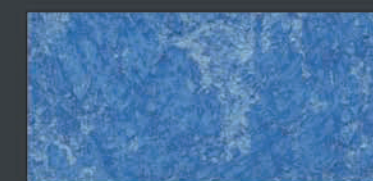
ISEO 101



ISEO 08



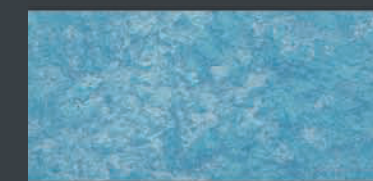
ISEO 33



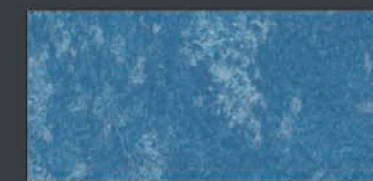
ISEO 23



ISEO 100



ISEO 88



ISEO 87



ISEO 86



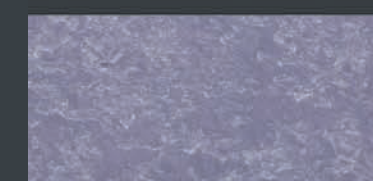
ISEO 78



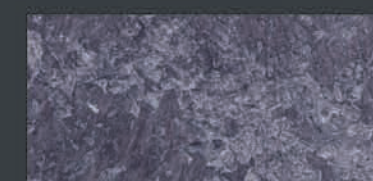
ISEO 28



ISEO 69



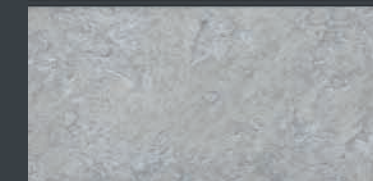
ISEO 50



ISEO 26



ISEO 53



ISEO 13



ISEO 02



ISEO 01